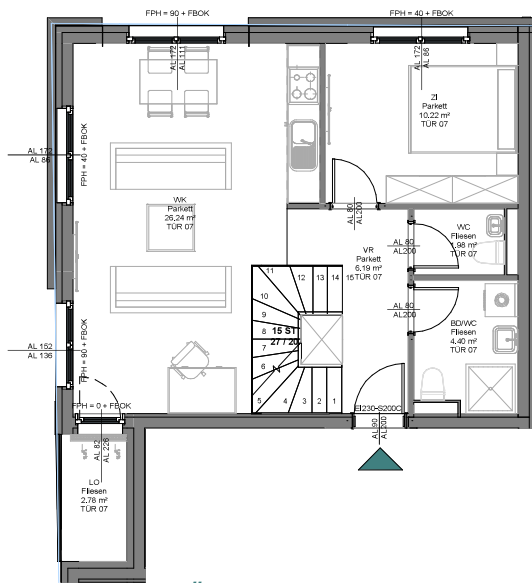


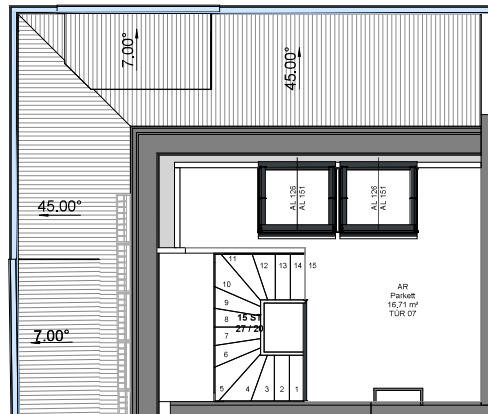


VERKAUFSPLAN  
 Adresse - Wien 1230, Lastenstraße ON 35  
 (Dr.-Neumann-Gasse ON 11)  
 GST NR - 128/16, 128/17  
 Katastralgemeinde - 01805 Leobing  
 Einlagezahl - 1026  
 VKF 7 - DG & GL - Tür 7  
 NEUBAU EINER WOHNHAUSANLAGE  
 Projektname - VKF 1332-607-00-00-001  
 Autor - Ing. Radka Dumová  
 Assistentin - B.A. Šárka Duglietta  
 Planinhalt - DG & GL - Tür 7

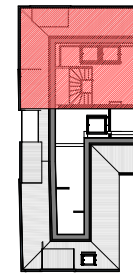
- Flächen - Tür 7 -					
Etage	Name	Bodenbelag	Fläche	VRK	VKF
TUR 07					
Pos 10 - EG	GA	Rasen	37,33 m <sup>2</sup>	0,1	3,73 m <sup>2</sup>
Pos 40 - DG	VR	Parkett	8,10 m <sup>2</sup>	1	8,10 m <sup>2</sup>
Pos 40 - DG	WC	Fleßen	1,98 m <sup>2</sup>	1	1,98 m <sup>2</sup>
Pos 40 - DG	BDWC	Fleßen	4,40 m <sup>2</sup>	1	4,40 m <sup>2</sup>
Pos 40 - DG	WK	Parkett	26,24 m <sup>2</sup>	1	26,24 m <sup>2</sup>
Pos 40 - DG	ZI	Parkett	10,22 m <sup>2</sup>	1	10,22 m <sup>2</sup>
Pos 40 - DG	LO	Fleßen	2,76 m <sup>2</sup>	1	2,76 m <sup>2</sup>
			51,93 m <sup>2</sup>		51,93 m <sup>2</sup>
Pos 50 - GL	AR	Parkett	16,71 m <sup>2</sup>	1	16,71 m <sup>2</sup>
TUR 07 8			16,71 m <sup>2</sup>		16,71 m <sup>2</sup>
Grand total 8			105,84 m <sup>2</sup>		72,25 m <sup>2</sup>



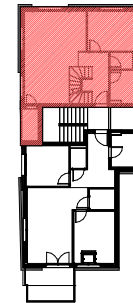
TÜR 7 (DG) - Maßstab 1:50



TÜR 7 (GL) - Maßstab 1:50



GRUNDRISS GALERIE Maßstab 1:200



GRUNDRISS DACHGESCHOSS Maßstab 1:200

GA = 37,33 m<sup>2</sup>  
 VKF = 72,25 m<sup>2</sup>